



## TRADER'S INFORMATION PACK and booking form

---

Dear Sir/Madam,

Long Marston Model Air Show is to be held at Long Marston Airfield over the two-day weekend of May 12<sup>th</sup>-13<sup>th</sup> 2012 and we would like to invite you to come along and have a trade presence throughout the show.

At the very start of the summer flying season and with hobbyists either completing projects they have been working on over the winter, gearing up for the start of the flying season 'proper' or both, the show is a perfect opportunity to move some stock and meet your customers while they enjoy a weekend's shopping with you.

Long Marston provides us with a full size tarmac runway and with a full flying schedule, a number of well know show pilots will be taking the opportunity to fly from the site and demonstrate both their aircraft and flying skills.

Should you have a display team you would like to have a flying slot then please let us know and we will attempt to accommodate you in the already-busy schedule.

Please find enclosed a trade booking forms, rates and terms and conditions for the show together with some specific information concerning the show layout. As you will see from the plan of the show, we have built trading locations into the organisation of the site layout to ensure customers and traders alike get the most from the event. Please feel free to email the information back to [trade@longmarstonmodelairshow.co.uk](mailto:trade@longmarstonmodelairshow.co.uk) if that is easier for you.

Obviously some trading locations will be more desirable than others and if you have a preference, we will attempt to meet it. However, we will operate stand allocation on a first come, first serve basis so please don't delay and reserve your spot immediately.

In addition to this, we are happy to include a small advert and a link to your own web site on our trade page of our web site so as well as completing your booking form, please let us have any supporting information and we will build it into our web site as soon as possible.

Yours Faithfully,

**Long Marston Model Air Show.**

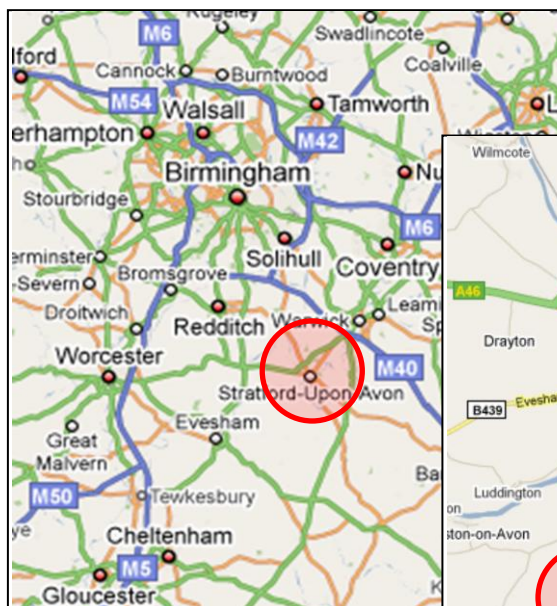
## How to Find Us.

Long Marston Airfield is located in the heart of rural Warwickshire just a 10 minute drive from Stratford-upon-Avon.

**From the M40**, leave at Junction 15 and head for Stratford-Upon-Avon and then follow the B4632.

**From the M5**, exit junction 7 from the North or junction 9 from the South and again head for the B4632.

The route is clearly signposted.



## TERMS AND CONDITIONS

1. Completed booking forms are required prior to the event. They can be sent to 3 Tollgate Close, Stratford-upon-Avon, Warwickshire CV37 9JY or the relevant information emailed to [trade@longmarstonmodelairshow.co.uk](mailto:trade@longmarstonmodelairshow.co.uk)
2. Payment must be received 28 days prior to the event in order to secure your location and ensure that where requested marquees etc are available.
3. Traders will be allocated two complimentary entrance passes per stand, unless otherwise agreed with the organisers prior to the event
4. The organisers have the right to refuse admission and entrance to Long Marston Airfield at any time.
5. The organisers are not liable to give refunds for loss of trade and cancellations
6. Considerations must be made for other trade stands and the public at all times.
7. Noise must be kept to a minimum.
8. All Health & Safety guidelines are to be followed without exception and Public Liability Insurance certificates will be inspected.
9. Authorised consent must be given to traders as it is an offence to trade without authorisation or consent under the Trade Description Act 1968. Traders must follow and comply with all trading legislation in place at the time of the event. The organisers are not responsible if any trader does not comply with this requirement.
10. Traders are responsible for the clearing of their site of all litter and objects that could cause harm to the public, other traders, staff and vehicles.
11. You must be able to supply your own electrical generation. This must be safe, secure and be kept away from the public.
12. Traders are responsible for their own insurance cover. The appropriate cover is required at all times against fire and all other risks including third-party claims. The organisers are not responsible for any damage, theft or loss under any circumstances that may occur on site.
13. Dogs are permitted providing they are kept under control on a lead and the owners clear up after them.



# TRADE BOOKING FORM

Please complete and return this form with your cheque made payable to “**Long Marston Model Air Show**” to John Holliday, 29 Evesham Place, Stratford-upon-Avon, Warwickshire CV37 6HT. Tel. 07867 785304; E-mail: [trade@longmarstonmodelairshow.co.uk](mailto:trade@longmarstonmodelairshow.co.uk)

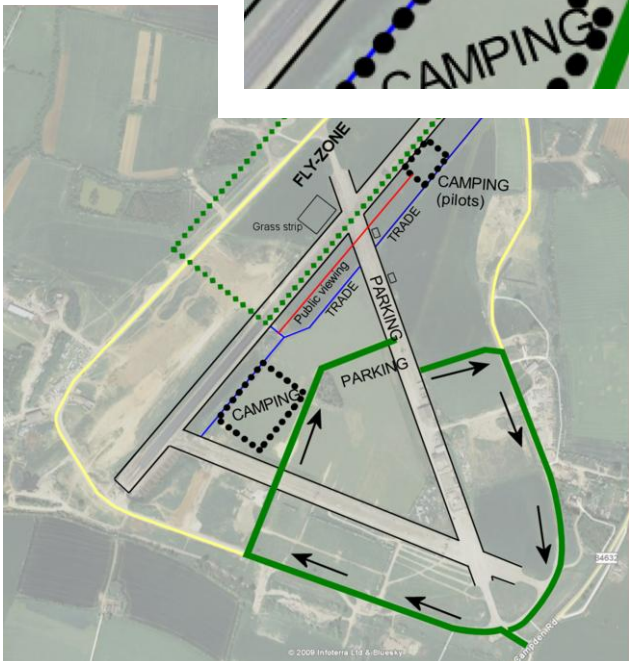
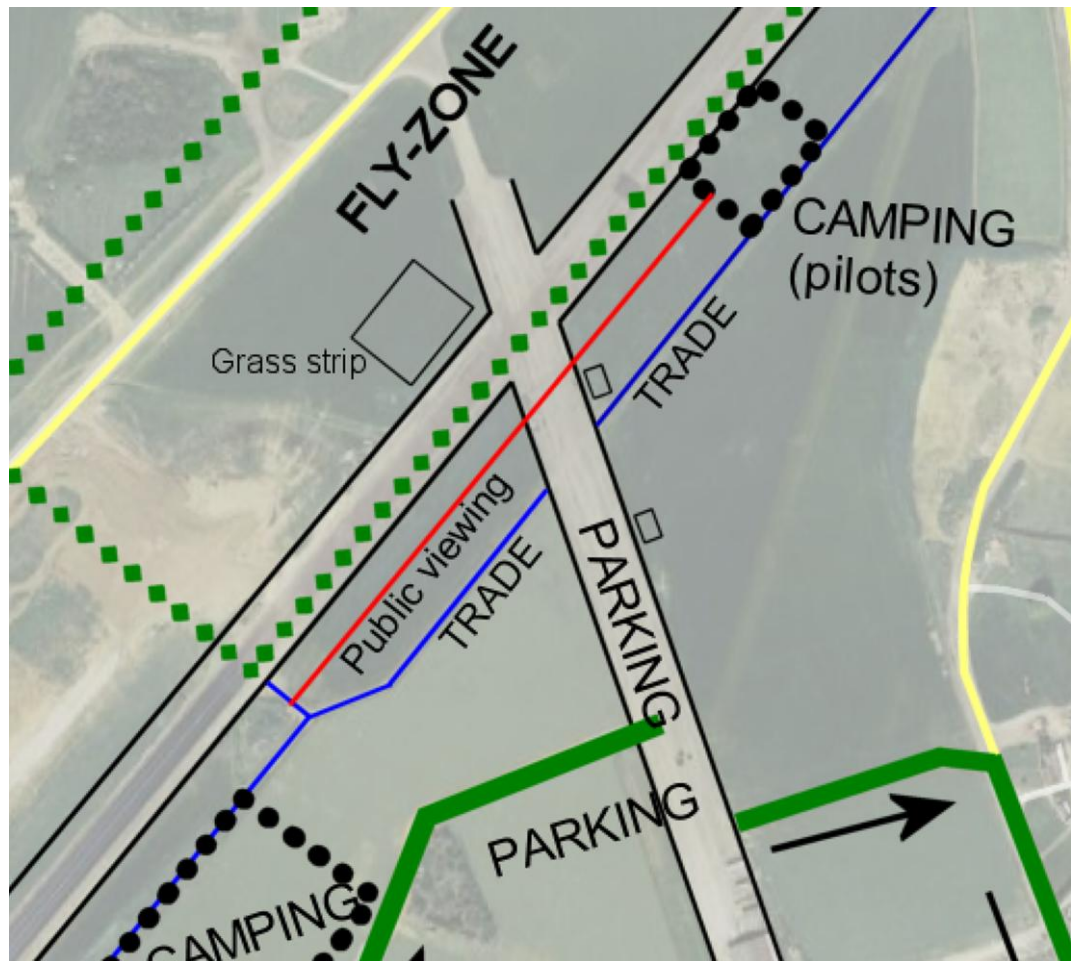
<b>Company name</b>		
<b>Contact name</b>		
<b>Address</b>		
<b>Telephone Number</b>		
<b>Frontage required (in feet)</b>		@ £7 per foot = £
<b>Marquee Required*</b>	Yes /No	Specify Size:
<b>Camping Required</b>	Yes / No	
<b>Web site feature/links</b>	Yes / No	
<b>Notes / Special requirements</b>		

Signature \_\_\_\_\_ Date \_\_\_\_\_

Name \_\_\_\_\_

**\*PLEASE NOTE** that we can arrange marquees for traders and that payment will be required in advance and is non-refundable.

# Site Layout



Long Marston is a former WWII Bomber training base with three run ways in the classic 'A' shape.

Nowadays the site is used as a drag racing strip as well as being used by micro light and a few private light aircraft.

Our display line is over 200m and the show will be centered on the runway intersection providing a focal point for the show. As you can see, trade stands are in the same area.

With trade stands fronted by a tarmac 'return road' (with trade stands on grass), the site promises to be a favorite annual venue for the show.